



1 Function and area of use

This document describe what is included in the iX runtime installation.

It also contain a step-by-step guide on how to install a new or update an older driver on a runtime PC/TxC and also how to update the iX Runtime version on a PC/TxC.

2 About the Start-up document

This Start-Up document should not be considered as a complete manual. It is an aid to be able to start up a normal application quickly and easily. For further information we refer to the iX Developer reference manual and User guide.

- MAxx831x (Reference manual)
- MAxx832x (User Guide)

This document and other Start-Up documents can be downloaded from www.beijerelectronics.com.

Please use the address manuals@beijerelectronics.com for feedback on our Start-Up documents.

3 What the runtime installation contains

The iX runtime installation includes the .NET framework and SQL CE files required to run applications designed in iX Developer.


It also includes the latest release of all the communication drivers available in iX Developer.

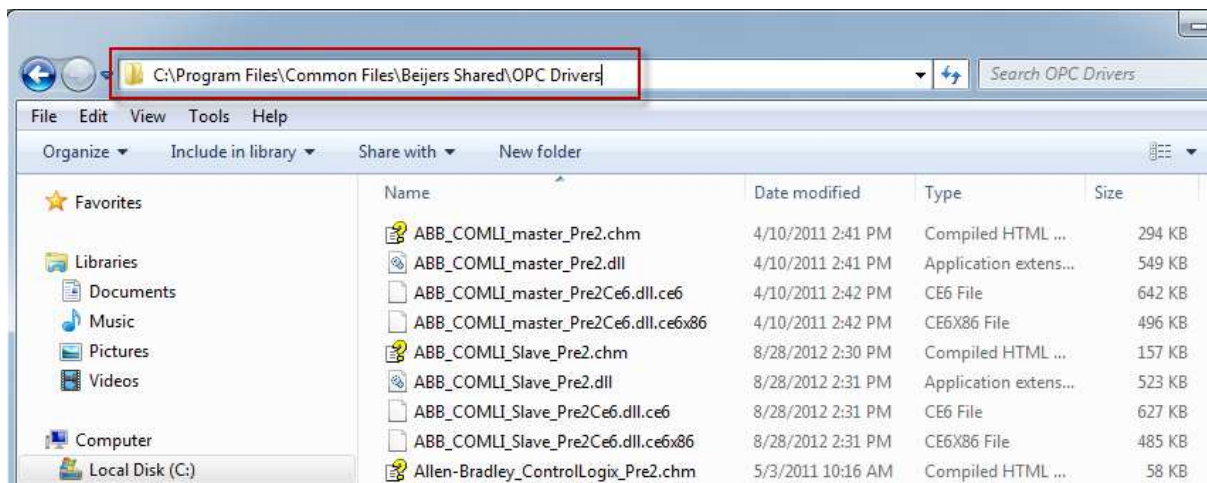
If a new driver is released or if a new version of an older driver is available, it must be installed manually by an operator.

When you update your iX runtime installation to a newer version, you will automatically replace the communication drivers included in the original runtime installation with the newer driver included in the newer version of the software installation package.

If you have manually updated any driver, it will also be replaced by the one included in the software installation package.

4 How to install a new driver/update an existing one

- If only a .cab file is available, extract all the files from the archive.
- There should be 3-4 files in the archive (depending on which driver is used), they all have the same name, but different file endings:
.chm, .dll, .dll.ce6 and .dll.ce6x86.
- Copy the driver files to e.g. a USB memory stick for easy transfer to the RT PC/TxC.
- Paste the files to the driver default folder on the RT PC/TxC.
- The default folder for a TxC is:
C:\Program Files\Common Files\Beijers Shared\OPC Drivers\
- Open the Run window (shortcut:  + R) and type:
- regsvr32.exe "C:\Program Files\Common Files\Beijers Shared\OPC Drivers\name_of_driver_file.dll"



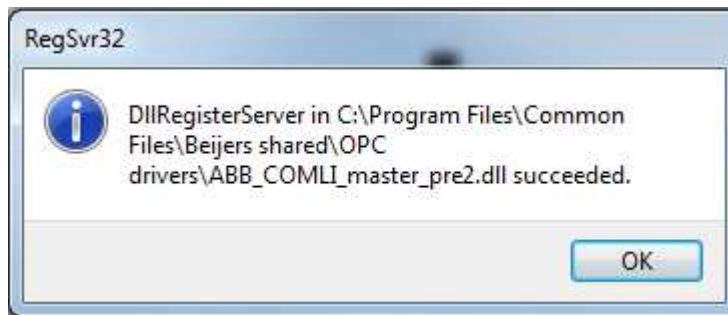
The path above refers to the location of the driver on a TxC.

Example:

To register the ABB COMLI master driver seen in the screenshot above, the syntax in the Run window would be:

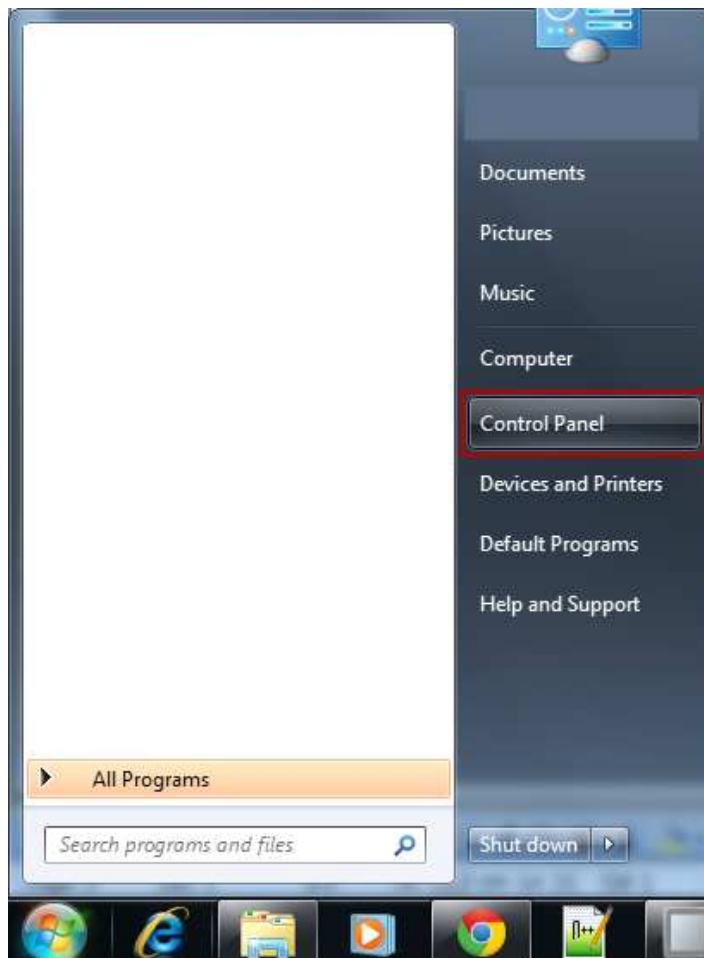
```
regsvr32.exe "C:\Program Files\Common Files\Beijers Shared\OPC  
Drivers\ABB_COMLI_master_Pre2.dll"
```

You will get a popup from DllRegisterServer to verify if registration was successful or not:

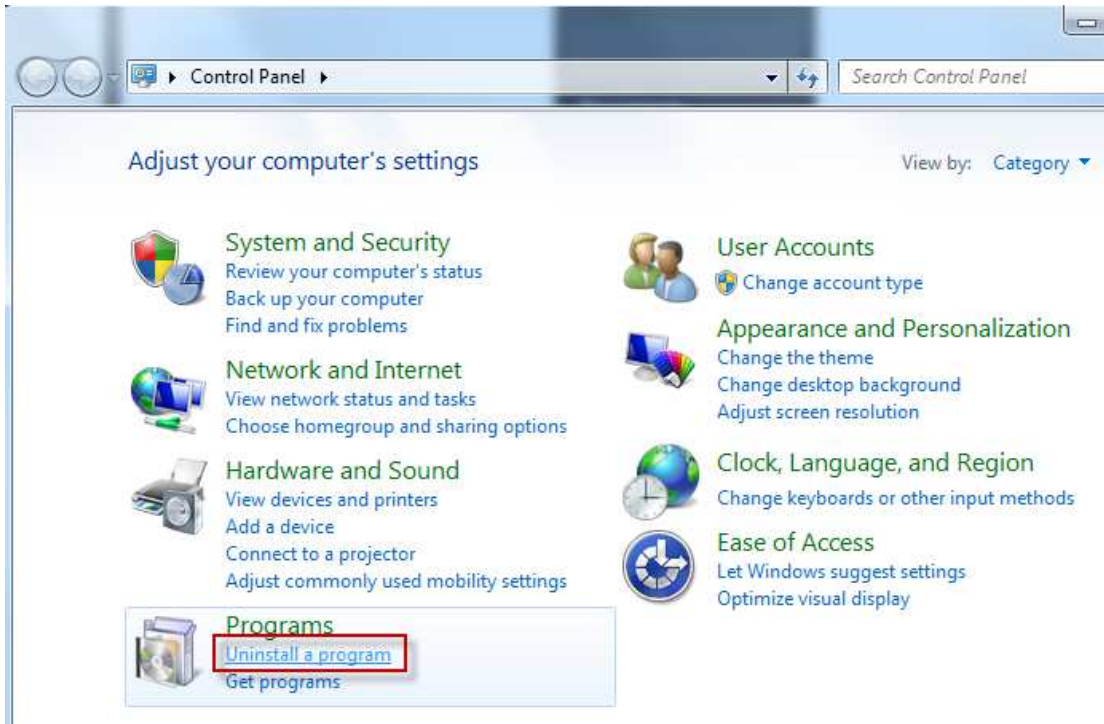


5 How to update the Runtime version on a PC/TxC

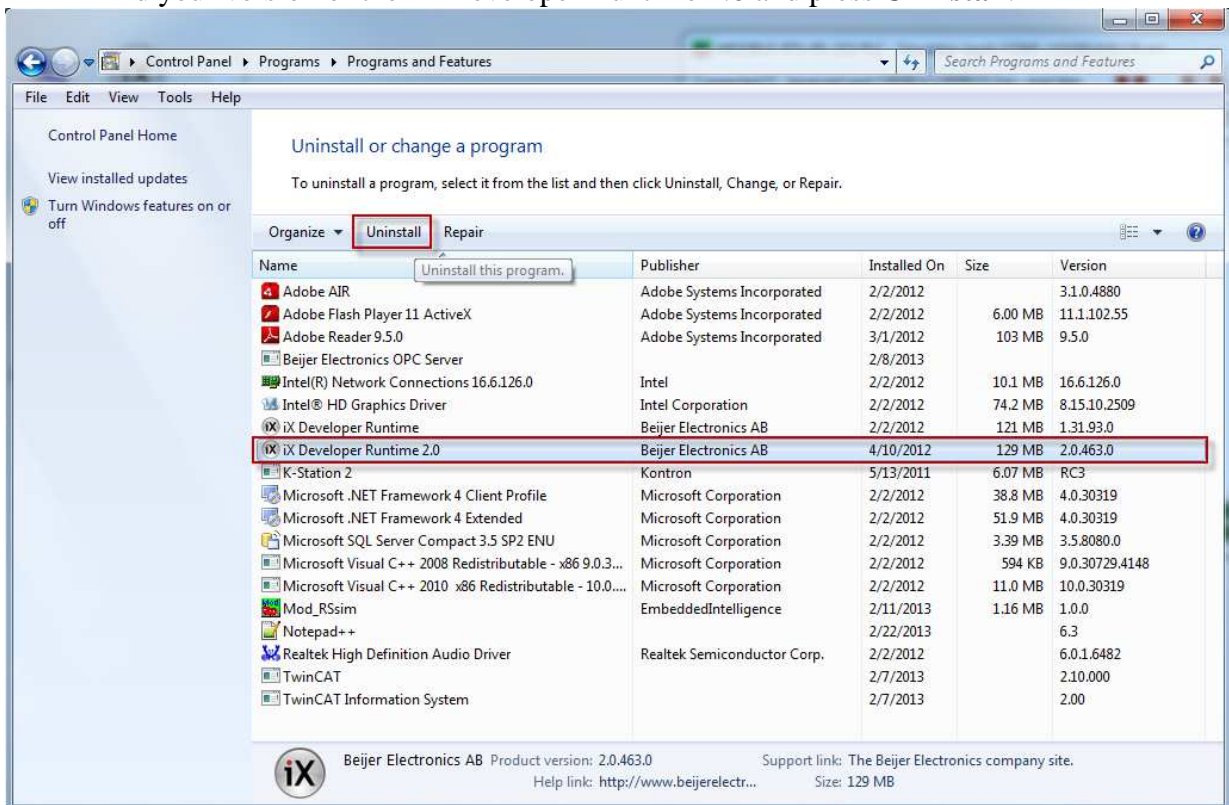
- Press Windows Button, select **Control Panel**.



Select **Uninstall a program**:

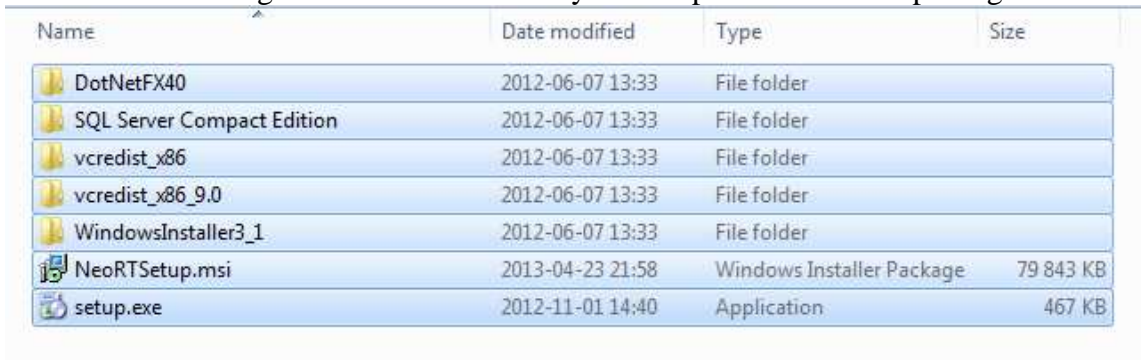


- Find your version of the iX Developer Runtime 2.0 and press **Uninstall**.



- Follow the on-screen instructions until the uninstall is complete.
- Copy the new iX Runtime installation files to the PC/TxC.

- Placing them in a folder on the desktop is usually the easiest.
- The following is the files and folders your complete installation package should contain:



Name	Date modified	Type	Size
DotNetFX40	2012-06-07 13:33	File folder	
SQL Server Compact Edition	2012-06-07 13:33	File folder	
vcredist_x86	2012-06-07 13:33	File folder	
vcredist_x86_9.0	2012-06-07 13:33	File folder	
WindowsInstaller3_1	2012-06-07 13:33	File folder	
NeoRTSetup.msi	2013-04-23 21:58	Windows Installer Package	79 843 KB
setup.exe	2012-11-01 14:40	Application	467 KB

- Run the setup.exe as an administrator and follow the instructions until the installation is complete.
- Your update of the iX Runtime is now complete.